

RECEIVED
LARAMIE COUNTY
CHEYENNE, WY.

'87 AUG 28 AM 9 08

CERTIFIED LAND CORNER RECORDATION

DESCRIPTION OF CORNER EVIDENCE FOUND, AND ORIGINAL RECORD (if known)

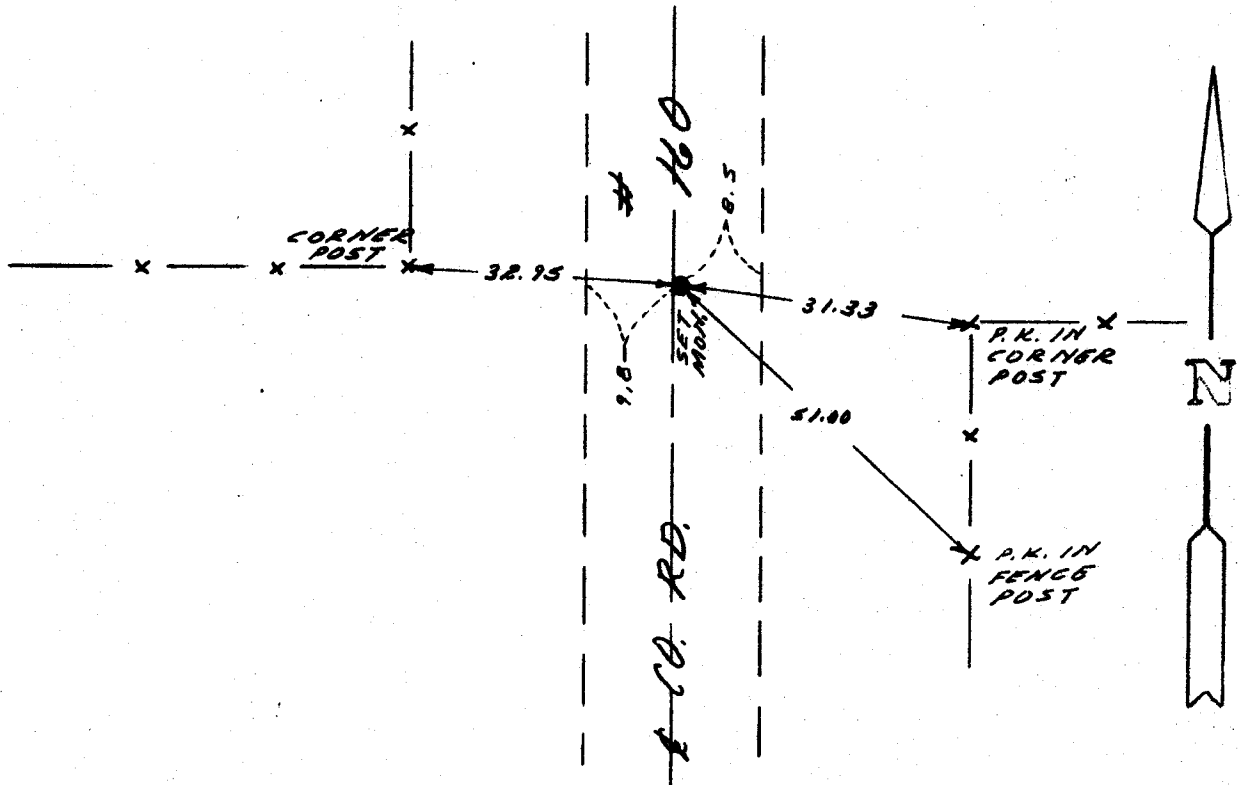
T. 15 N.
1/4 12 | 7
R. 61 W. R. 60 W.

FOUND: NO EVIDENCE OF PREVIOUS MONUMENTATION.
SET: 1/2" X 18" LONG REBAR WITH ALUMINUM CAP STAMPED "SSS L.S. 2500"
PROTECTING 0.2 FEET BELOW ROAD SURFACE SET AT PROPORTIONATE DISTANCE AND FROM ADJACENT LAND OWNERS TESTIMONY

DESCRIPTION OF MONUMENT AND ACCESSORIES ESTABLISHED TO PERPETUATE THE ORIGINAL LOCATION OF THIS CORNER:

SEE TIES BELOW

SKETCH, WITH COURSE AND DISTANCE TO ADJACENT CORNER IF DETERMINED IN THIS SURVEY. (May Sketch or Paste Reproduction on Reverse Side.)



I, JOHN A. STELL certify that I have carefully performed or reviewed the work done on the diagrammed corner as reported on this recordation form and approve the same.

John A. Stell
Signature of Surveyor

L.S. 2500
Registration No.

STATE OF WYOMING,
Office of Clerk and Recorder,
County of Laramie

This "corner record" was filed for record on the 28 day of August, 1987, was noted on the cross-index plat and is assigned page No. _____, in book No. _____

Frank C. Whitehead
County Official

Cross Index No. <u>6-28</u>	T. <u>15 N</u>	R. <u>61 W</u>	Mer. <u>67</u>
<u>6-1</u>	T. <u>15 N</u>	R. <u>60 W</u>	Mer.
_____	T. _____	R. _____	Mer.
_____	T. _____	R. _____	Mer.
_____	T. _____	R. _____	Mer.
_____	T. _____	R. _____	Mer.

G-1 15-60
G-25 15-61